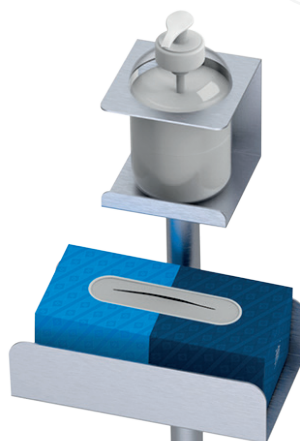




We help you to protect yourself





Innovation • Precision • Flexibility



**Designer Club** has been **manufacturer of communication products for the point of sale** for over 25 years.

Located in Azzate (VA), it has over 7000 mq divided into 8 facilities equipped with **the most modern production technologies**.

Thanks to the wide variety of machinery and qualified staff, it is able to follow the entire production process by providing not only the standard product, but also a *personalized customization & design service*.

Given the current health emergency, **Designer Club** has decided to convert its production to supply **the new range of products necessary for the fight against Covid-19**.

*Discover the new Protections / Covid-19 range*







*Personalized customization & design service!*







## Index

### 1. Clear counter and hanging protection shields

6 - 11

### 2. Floor stands with hand sanitizer dispenser and gloves holders

12 - 17

### 3. Full face covering anti-droplet shields

18 - 19

### 4. Safe distance retractable posts

20 - 23

### 5. Counter and wall communication holders

24 - 25

### 6. Frames and poles

26 - 27

### 7. Information signs

28 - 29

### 8. Accessories for protection products

30 - 31

## CLEAR COUNTER PROTECTION SHIELDS SIMPLE RANGE

Clear counter protection shields.  
To minimize spread of viruses and  
protect staff and customers from exposure.



*Customizable  
with your logo*

### CLEAR COUNTER PROTECTION SHIELDS WITH TRIANGULAR FEET - 600 X 900 MM

Clear counter protection shields with triangular feet.

Ideal for pharmacies, shops, and other environments where it is advisable to keep a social distance.



**Ref. 113 781**

Dimensions: 600x900 mm  
Plexiglass thickness: 4 mm  
\*(1)



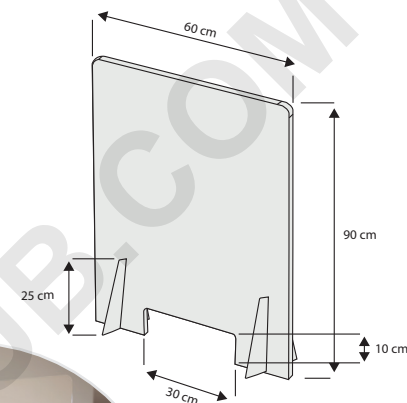
**Ref. 113 782**

Dimensions: 600x900 mm  
Plexiglass thickness: 4 mm  
Rectangular opening h: 10 cm  
\*(1)



**Ref. 113 783**

Dimensions: 600x900 mm  
Plexiglass thickness: 4 mm  
Arch opening h: 25 cm  
\*(1)



*Other dimensions on request*



### CLEAR COUNTER PROTECTION SHIELDS WITH TRIANGULAR FEET - 600 X 750 MM

Clear counter protection shields with triangular feet.

Ideal for pharmacies, shops, and other environments where it is advisable to keep a social distance.



**Ref. 113 784**

Dimensions: 600x750 mm  
Plexiglass thickness: 4 mm  
\*(1)



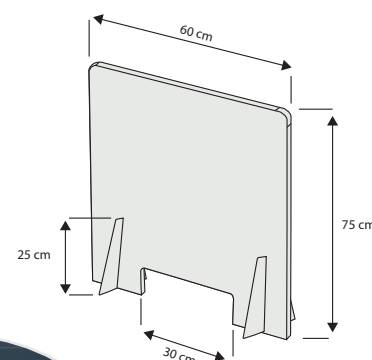
**Ref. 113 785**

Dimensions: 600x750 mm  
Plexiglass thickness: 4 mm  
Rectangular opening h: 12 cm  
\*(1)



**Ref. 113 786**

Dimensions: 600x750 mm  
Plexiglass thickness: 4 mm  
Arch opening h: 25 cm  
\*(1)



*Other dimensions on request*



## CLEAR COUNTER PROTECTION SHIELDS - SIMPLE RANGE

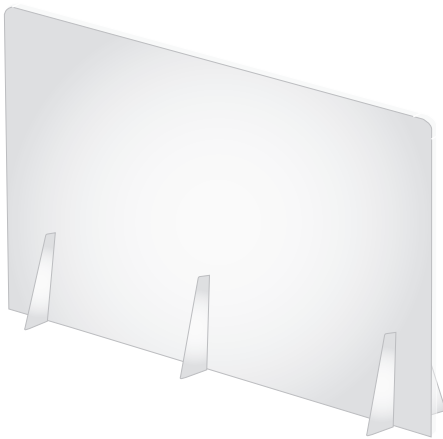


*Customizable  
with your logo*

### CLEAR COUNTER PROTECTION SHIELD WITH TRIANGULAR FEET - 1200 X 750 MM

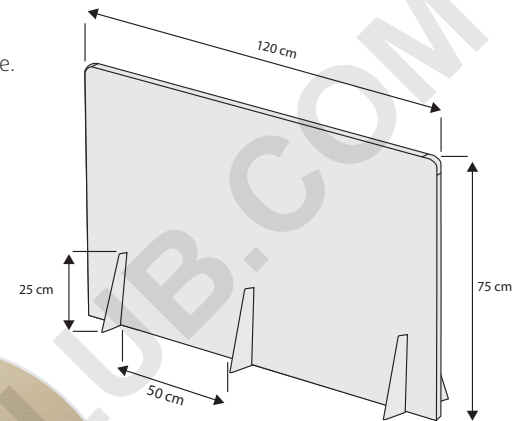
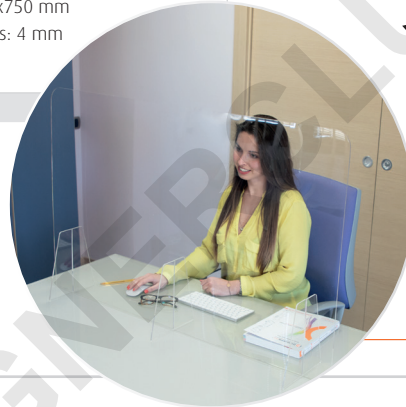
Clear counter protection shields with triangular feet.

Ideal for pharmacies, shops, and other environments where it is advisable to keep a social distance.



**Ref. 113 787**

Dimensions: 1200x750 mm  
Plexiglass thickness: 4 mm  
\*(1)



*Other dimensions  
on request*

### CLEAR COUNTER PROTECTION SHIELD WITH RECTANGULAR FEET - 600 X 900 MM

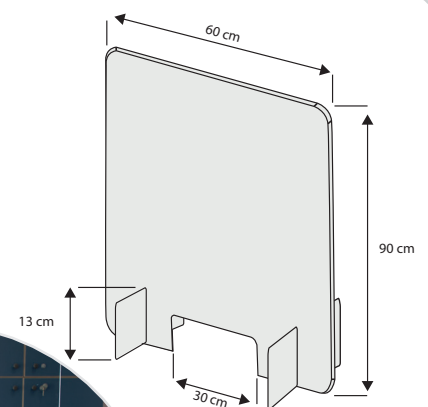
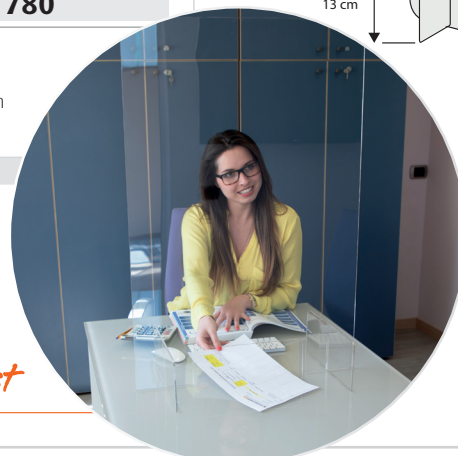
Clear counter protection shields with feet.

Ideal for pharmacies, shops, and other environments where it is advisable to keep a social distance.



**Ref. 113 780**

Dimensions: 600x900 mm  
Plexiglass thickness: 4 mm  
Rectangular opening h: 10 cm  
\*(1)



*Other dimensions  
on request*



# CLEAR COUNTER PROTECTION SHIELDS PREMIUM RANGE

Clear counter protection shields.  
To minimize spread of viruses and  
protect staff and customers from exposure.

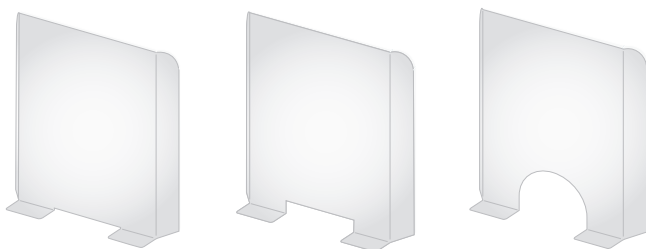


*Customizable  
with your logo*

## CLEAR COUNTER PROTECTION SHIELDS - MM 680 X 850

Clear counter protection shields.

Ideal for pharmacies, shops and other environments where it is advisable to keep a social distance.



### Ref. 113 770

Dimensions: 680x850 mm  
Plexiglass thickness: 4 mm  
\*(1)

### Ref. 113 771

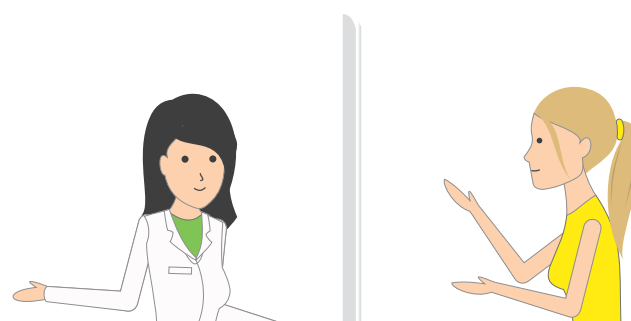
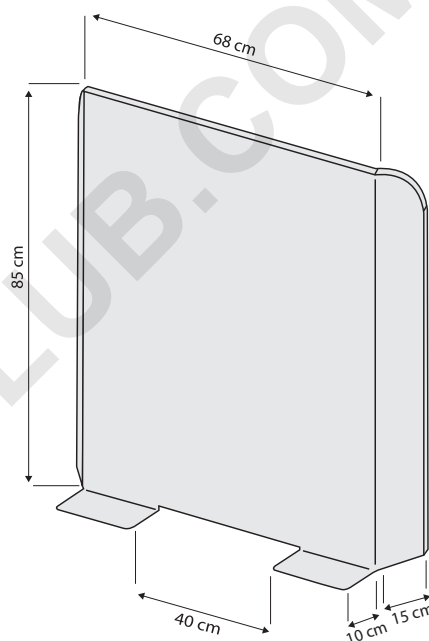
Dimensions: 680x850 mm  
Plexiglass thickness: 4 mm  
Rectangular opening h: 12 cm  
\*(1)

### Ref. 113 772

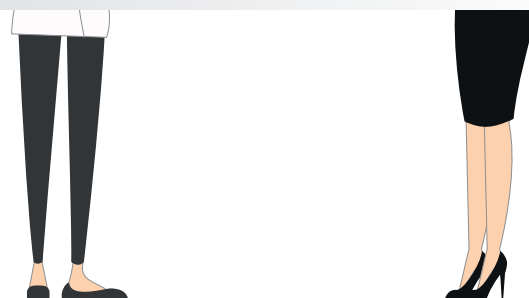
Dimensions: 680x850 mm  
Plexiglass thickness: 4 mm  
Arch opening h: 25 cm  
\*(1)

ALSO AVAILABLE WITH ADHESIVE

*Other dimensions on request*



*It protects staff in contact with customers.*





## CLEAR COUNTER PROTECTION SHIELDS - PREMIUM RANGE

### CLEAR COUNTER PROTECTION SHIELDS - MM 680 X 600

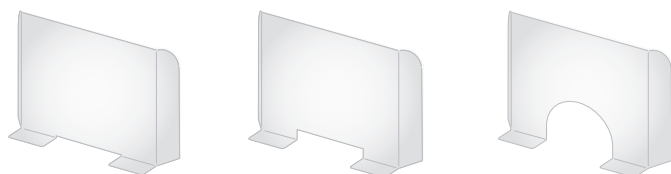


*Customizable  
with your logo*

Clear counter protection shields.

Ideal for pharmacies, shops and other environments where it is advisable to keep a social distance.

NEW



#### Ref. 113 775

Dimensions: 680x600 mm  
Plexiglass thickness: 4 mm  
\*(1)

#### Ref. 113 776

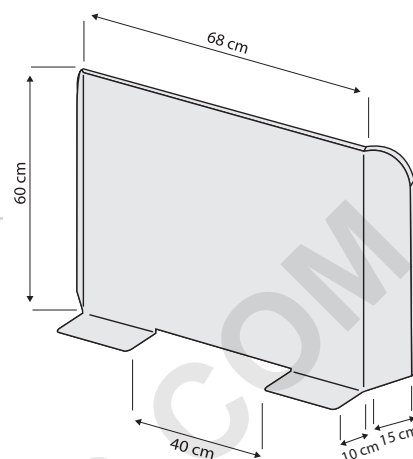
Dimensions: 680x600 mm  
Plexiglass thickness: 4 mm  
Rectangular opening h: 12 cm  
\*(1)

#### Ref. 113 777

Dimensions: 680x600 mm  
Plexiglass thickness: 4 mm  
Arch opening h: 25 cm  
\*(1)

ALSO AVAILABLE WITH ADHESIVE

*Other dimensions on request*



Protections / Covid-19



For info contact us on number:

+39 0332 455 360

## CLEAR HANGING PROTECTION SHIELDS

Clear hanging protection shields.  
To minimize spread of viruses and  
protect staff and customers from exposure.



Customizable  
with your logo

### CLEAR HANGING PROTECTION SHIELDS - MM 1000 X 900

Clear hanging protection shields.

Ideal for pharmacies, shops and other environments where it is advisable to keep a social distance.

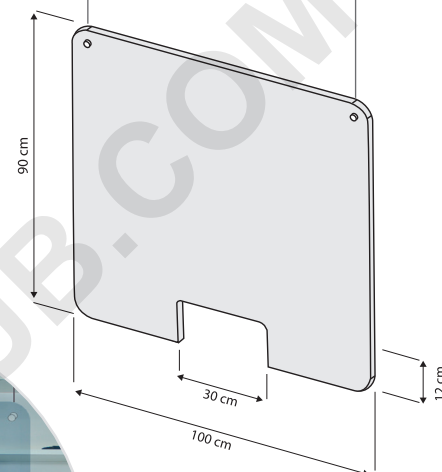


#### Ref. 113 760

Dimensions: 1000x900 mm  
Plexiglass thickness: 4 mm  
Central rectangular  
opening h: 12 cm  
\*(1)

#### Ref. 113 761

Dimensions: 1000x900 mm  
Plexiglass thickness: 4 mm  
Lateral rectangular  
opening h: 12 cm  
\*(1)

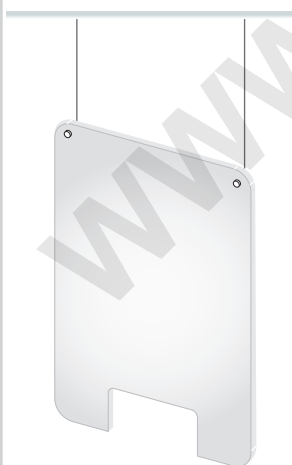


Other dimensions  
on request

### CLEAR HANGING PROTECTION SHIELD - MM 660 X 900

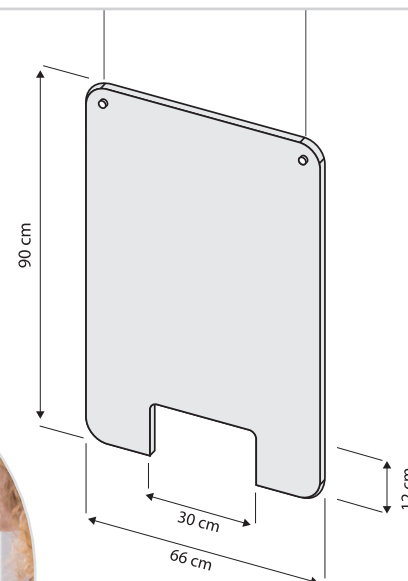
Clear hanging protection shield.

Ideal for pharmacies, shops and other environments where it is advisable to keep a social distance.



#### Ref. 113 765

Dimensions: 660x900 mm  
Plexiglass thickness: 4 mm  
Central rectangular opening h: 12 cm  
\*(1)



Other dimensions  
on request



## CLEAR HANGING PROTECTION SHIELDS

### CLEAR HANGING PROTECTION SHIELDS - MM 1000 X 660

Clear hanging protection shields.

Ideal for pharmacies, shops and other environments where it is advisable to keep a social distance.



#### Ref. 113 766

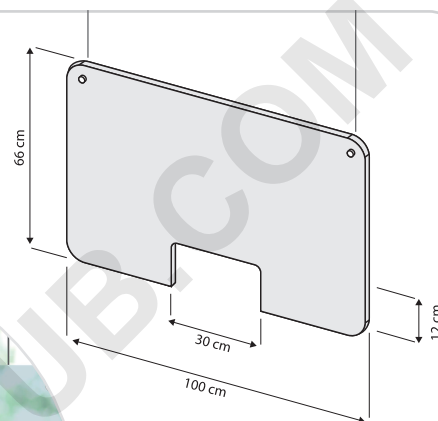
Dimensions: 1000x660 mm  
Plexiglass thickness: 4 mm  
Central rectangular opening h: 12 cm  
\*(1)

#### Ref. 113 767

Dimensions: 1000x660 mm  
Plexiglass thickness: 4 mm  
Lateral rectangular opening h: 12 cm  
\*(1)

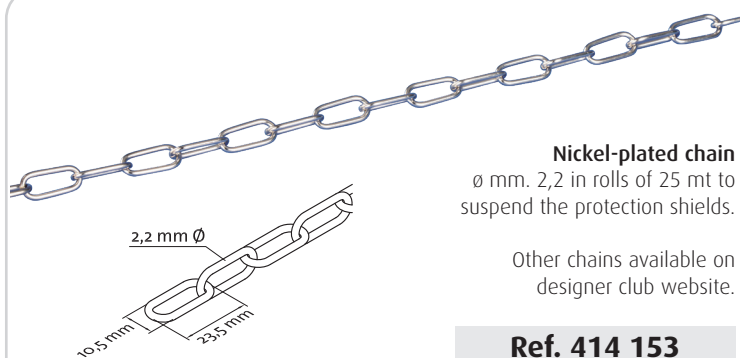


*Customizable  
with your logo*



*Other dimensions  
on request*

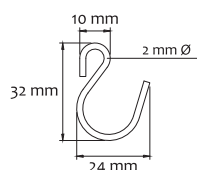
### Accessories for protection shields



**Nickel-plated chain**  
Ø mm. 2,2 in rolls of 25 mt to suspend the protection shields.

Other chains available on designer club website.

**Ref. 414 153**



**Metal "S" hook**  
height mm. 32, to hang or to connect the protection shields.

Other hooks available on designer club website.

**Ref. 416 020**

\* (1) To clean the plexiglass, use a soft cloth, for example in microfibre, in order to avoid accidental abrasions. Use a non-alcoholic glass product as it can damage the product, or a non-acidic detergent such as diluted soap. Spray a small amount on the cloth and pass it on the surface.



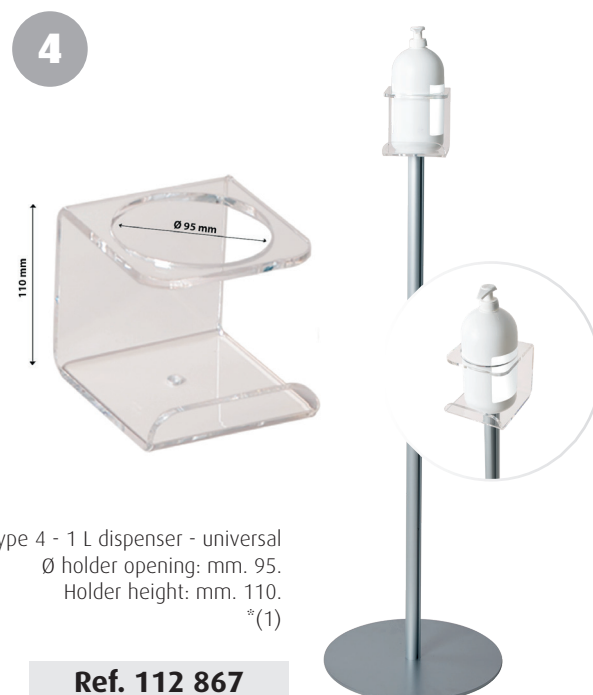
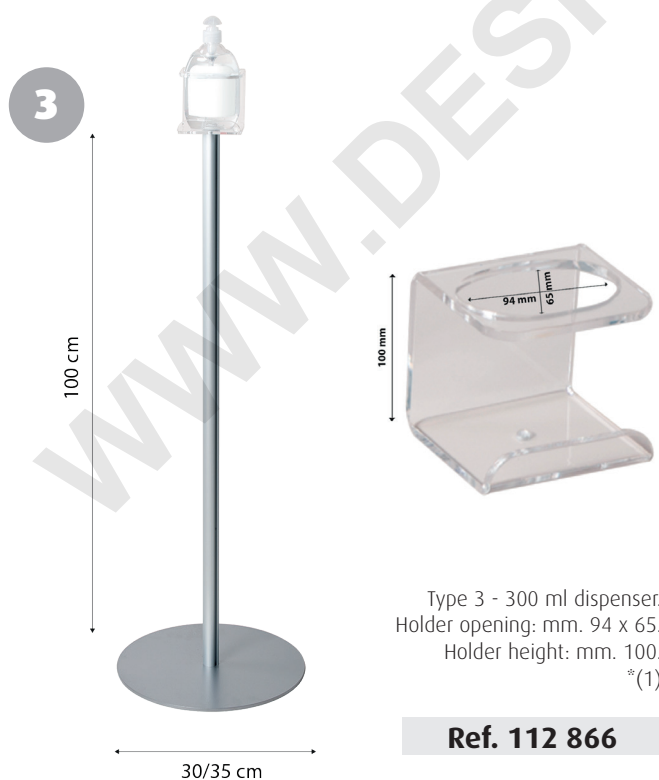
# FLOOR STANDS WITH HAND SANITIZER DISPENSER HOLDERS

Range of floor stands with hand sanitizer  
dispenser holder and with disposable gloves holder.



## FLOOR STANDS WITH HAND SANITIZER DISPENSER HOLDERS

Floor stands with plexiglass hand sanitizer dispenser holders.  
Type 1 / Type 2 / Type 3 / Type 4.





## FLOOR STANDS WITH HAND SANITIZER DISPENSER HOLDERS

Range of floor stands with hand sanitizer dispenser holder and with disposable gloves holder.

### FLOOR STAND WITH HAND SANITIZER DISPENSER HOLDER

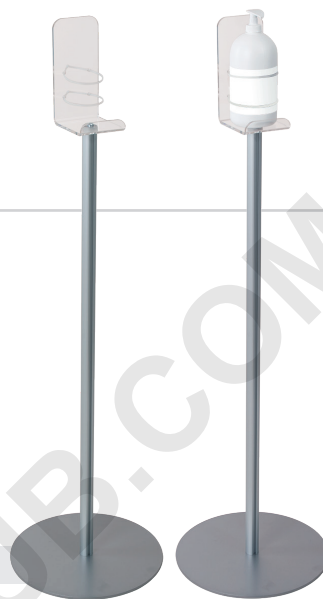
Floor stand with hand sanitizer dispenser holder.  
Type 5 - Universal. 1 L dispenser with cable tie. \*(1)



20 cm



Ref. 112 876



### FLOOR STAND WITH TOUCHLESS HAND SANITIZER DISPENSER HOLDER

Floor stand with touchless hand sanitizer dispenser holder.  
\*(1)



Ref. 112 868



# FLOOR STANDS WITH HAND SANITIZER DISPENSER HOLDERS AND DISPOSABLE GLOVES HOLDERS

Range of floor stands with hand sanitizer  
dispenser holder and with  
disposable gloves holder.



## FLOOR STANDS WITH HAND SANITIZER DISPENSER HOLDERS AND DISPOSABLE GLOVES HOLDERS



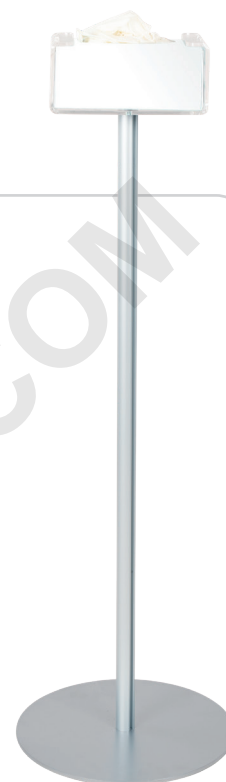
Floor stand with disposable  
gloves holder and sanitizer  
dispenser holder.  
\*(1)

**Ref. 112 875**



Floor stand with  
disposable gloves holder.  
\*(1)

**Ref. 112 869**



Floor stand with  
disposable gloves holder.  
\*(1)

**Ref. 112 877**



## CLEAR WALL MOUNTED HOLDERS FOR HAND SANITIZER DISPENSER AND DISPOSABLE GLOVES

Clear wall mounted holders in plexiglass for hand sanitizer dispenser and disposable gloves.

### CLEAR WALL MOUNTED HOLDERS FOR HAND SANITIZER DISPENSER



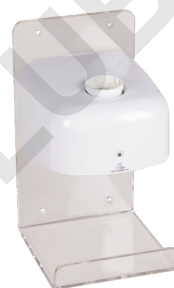
Clear wall mounted holder in plexiglass for hand sanitizer dispenser. \*(1)

**Ref. 113 735**



Clear wall mounted holder in plexiglass for hand sanitizer dispenser, with cable tie. \*(1)

**Ref. 113 738**



Clear wall mounted holder in plexiglass for touchless hand sanitizer dispenser. \*(1)

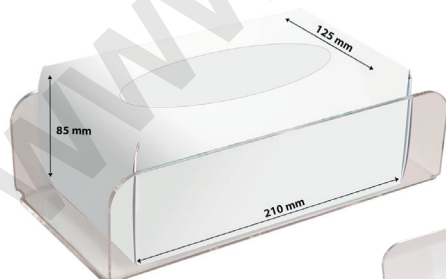
**Ref. 113 736**



### CLEAR WALL MOUNTED HOLDERS FOR DISPOSABLE GLOVES

Clear wall mounted holder in plexiglass for disposable gloves. \*(1)

**Ref. 113 745**



1 junction



2 junction

Clear wall mounted holder in plexiglass for disposable gloves. \*(1)

**Ref. 113 737**

\*(1) To clean the plexiglass, use a soft cloth, for example in microfibre, in order to avoid accidental abrasions. Use a non-alcoholic glass product as it can damage the product, or a non-acidic detergent such as diluted soap. Spray a small amount on the cloth and pass it on the surface.

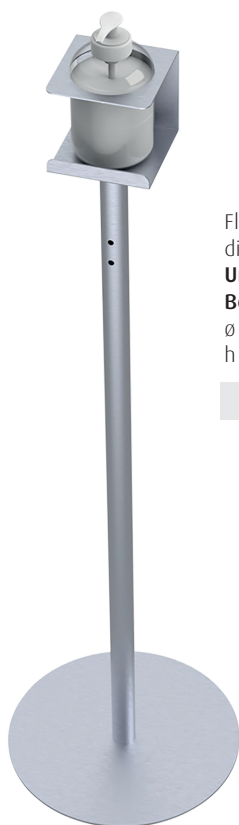


# FLOOR STANDS AND WALL MOUNTED SUPPORTS FOR HAND SANITIZER AND DISPOSABLE GLOVES HOLDERS

Floor stands and wall mounted supports for hand sanitizer and disposable gloves holders.



## FLOOR STANDS SUPPORTS FOR HAND SANITIZER AND DISPOSABLE GLOVES HOLDERS



Floor stand with hand sanitizer dispenser holder in metal.  
**Universal type -**  
**Bottle from 0,5 to 1 L.**  
ø opening support: mm 95  
h support: mm 111

**Ref. 112 855**

*Customizable  
with double use*



Floor stand with disposable gloves holder and hand sanitizer dispenser holder in metal. **Bottle:** ø opening support: mm 95 - h support: mm 111  
**Disposable gloves holder:**  
Width: mm 250 - H: mm 70  
Depth: mm 136

**Ref. 112 856**



Floor stand with metal disposable gloves.

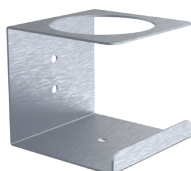
**Ref. 112 857**



## WALL MOUNTED HOLDER FOR HAND SANITIZER AND DISPOSABLE GLOVES

Wall mounted holder in metal for hand sanitizer dispenser.

**Ref. 113 747**



Wall mounted holder in metal for disposable gloves.

**Ref. 113 748**

## MESSAGE HOLDERS FOR FLOOR STANDS

Message holders in plexiglass 4 mm, A5 format customizable with adhesive, to be applied to floor stand support for hand sanitizer and floor stand support for disposable gloves.

**Ref. 113 749**




## FULL FACE COVERING ANTI-DROPLET SHIELDS

Full face covering anti-droplet shields that protect from droplets, splashes, dust and more.  
Available with two different closing systems: velcro or rivets.

### FULL FACE COVERING ANTI-DROPLET SHIELD

Kit composed of:

Ref. 113 750


Full face covering anti-droplet shield in PET   
dimensions 29,5 x 33,5 cm.  
PP band length 67 cm.  
Closing system with rivets.

Closing system with rivets



Kit composed of:

Ref. 113 751

Full face covering anti-droplet shield in PET   
dimensions 29,5 x 33,5 cm.  
PP band length 67 cm.  
Closing system with velcro.

Closing system with velcro



\*It isn't a "surgical medical device", neither a "personal protective equipment" referred of article 74, paragraph 1, D.L. 9 april 2008, n.18.  
It doesn't assure the protection of users from infection with pathogens, neither ensure failed contagion from pathogens to third parties.  
The article is reusable and can be disinfected with alcohol and similar products.  
It mustn't be dispersed in the environment.

## FULL FACE COVERING ANTI-DROPLET SHIELDS

### FULL FACE COVERING ANTI-DROPLET SHIELD WITH SPACER

Kit composed of:

Ref. 113 752

Full face covering anti-droplet shield in **PET** , with spacer.

Dimensions: 29,5 x 33,5 cm.

Band in PP adjustable length 63/67 cm.

Closing system with velcro.



\*It isn't a "surgical medical device", neither a "personal protective equipment" referred of article 74, paragraph 1, D.L. 9 april 2008, n.18. It doesn't assure the protection of users from infection with pathogens, neither ensure failed contagion from pathogens to third parties. The article is reusable and can be disinfected with alcohol and similar products. It mustn't be dispersed in the environment.







## SAFE DISTANCE RETRACTABLE POSTS

Retractable posts ideal for mark the distance.  
Available in different colors and finishes.



### BASIC RETRACTABLE POST - BRUSHED STEEL

Basic retractable post.  
Dimension: 360 x 1010 mm  
Finishes: brushed steel.



#### Belt color

	RED	Ref. 660 000
	BLUE	Ref. 660 001
	BLACK	Ref. 660 002
	YELLOW / BLACK	Ref. 660 003
	WHITE / RED	Ref. 660 004
	WHITE	Ref. 660 005
	GREEN	Ref. 660 006
	ORANGE	Ref. 660 007
	YELLOW	Ref. 660 008

### BASIC RETRACTABLE POST - MATT BLACK

Basic retractable post.  
Dimension: 360 x 1010 mm  
Finishes: matt black.



#### Belt color

	RED	Ref. 660 010
	BLUE	Ref. 660 011
	BLACK	Ref. 660 012
	YELLOW / BLACK	Ref. 660 013
	WHITE / RED	Ref. 660 014
	WHITE	Ref. 660 015
	GREEN	Ref. 660 016
	ORANGE	Ref. 660 017
	YELLOW	Ref. 660 018

### SAFE DISTANCE ADHESIVE TAPE

Adhesive tape to mark the distance.  
Color: Yellow/black.



Ref. 430 226

## ACCESSORIES FOR RETRACTABLE POSTS MESSAGE HOLDERS

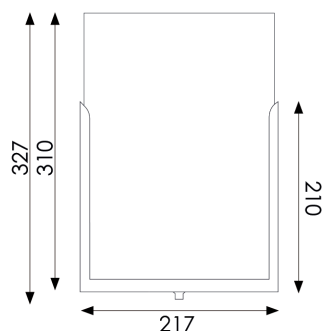
Support with vertical and horizontal message holder.

### VERTICAL MESSAGE HOLDERS A4/A3 FORMAT

Support with vertical message holders.  
Revolving 360°.

Available in dimension:

- 217 x 327 mm
- 305 x 445 mm

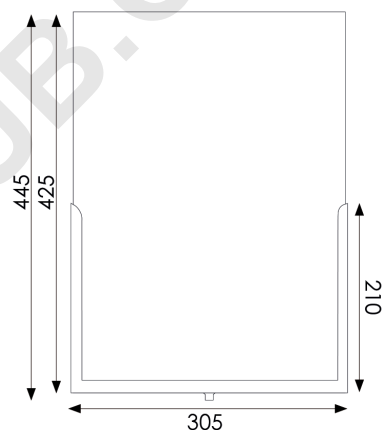


217 x 327 mm

**Ref. 660 100**

305 x 445 mm

**Ref. 660 102**

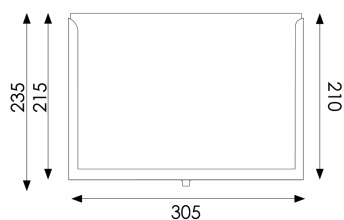


### HORIZONTAL MESSAGE HOLDERS A4/A3 FORMAT

Support with horizontal message holders.  
Revolving 360°.

Available in dimension:

- 305 x 235 mm
- 425 x 325 mm

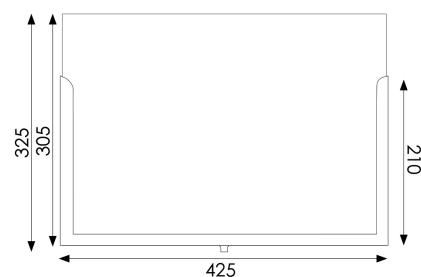


305 x 235 mm

**Ref. 660 101**

425 x 325 mm

**Ref. 660 103**



## WALL-MOUNTED CLIP

Wall-mounted clip for retractable posts.

### WALL-MOUNTED CLIP

Wall-mounted clip with retractable belt.



ø x h mm 60 x 125

**Ref. 660 130**

ø x h mm 60 x 125

**Ref. 660 131**

ø x h mm 15 x 100

**Ref. 660 132**

ø x h mm 60 x 125

**Ref. 660 135**

## ANTIPANIC MAGNETIC KIT

Antipanic magnetic kit for retractable posts.

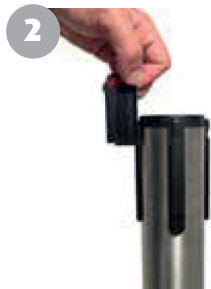
Antipanic magnetic kit for retractable posts.  
Dimensions: 25 x 75 mm



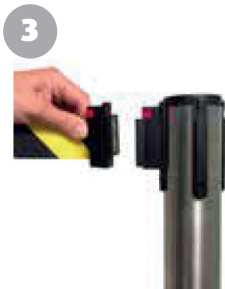
**Ref. 660 136**



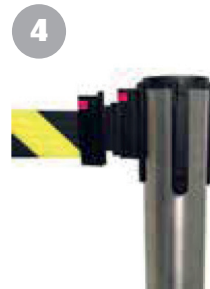
1  
Apply one of two magnet attachments to the tape.



2  
Apply the other to the receiving post or to the receiving clip on the wall.



3  
Bring the belt closer to the post to join them through magnet.



4  
The mechanism guarantees the tensioning of the belt and the same time the immediate release in the event of a collision.

# COUNTER AND WALL SIGN HOLDERS

## COUNTER SIGN HOLDERS

Counter sign holder realized in clear acrylic for displaying message.  
We can customized by screen digital printing or adhesive label.



Thickness: 2 mm - Dimension: 105 x 150 mm - A6

**Ref. 111 301**

Thickness: 2 mm - Dimension: 150 x 210 mm - A5

**Ref. 111 303**

Thickness: 2 mm - Dimension: 210 x 297 mm - A4

**Ref. 111 300**

Thickness: 2 mm - Dimension: 297 x 420 mm - A3

**Ref. 111 305**

## WALL-MOUNTED SIGN HOLDERS

Sign holders realized in clear acrylic for displaying message.  
We can customize by screen digital printing or adhesive label.



### Sign holders

Dimension: 105 x 150 mm - A6 **Ref. 111 048**

Dimension: 150 x 210 mm - A5 **Ref. 111 049**

Dimension: 210 x 297 mm - A4 **Ref. 111 050**

Dimension: 297 x 420 mm - A3 **Ref. 111 051**

### Sign holders with magnetic strip

Dimension: 105 x 150 mm - A6 **Ref. 111 056**

Dimension: 150 x 210 mm - A5 **Ref. 111 057**

Dimension: 210 x 297 mm - A4 **Ref. 111 058**

Dimension: 297 x 420 mm - A3 **Ref. 111 059**

### Sign holders with biadhesive

Dimension: 105 x 150 mm - A6 **Ref. 111 052**

Dimension: 150 x 210 mm - A5 **Ref. 111 053**

Dimension: 210 x 297 mm - A4 **Ref. 111 054**

Dimension: 297 x 420 mm - A3 **Ref. 111 055**

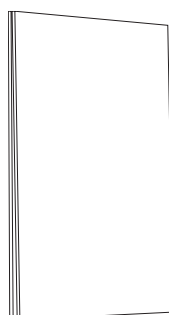
### Ceiling sign holders

Dimension: 105 x 150 mm - A6 **Ref. 111 312**

Dimension: 150 x 210 mm - A5 **Ref. 111 314**

Dimension: 210 x 297 mm - A4 **Ref. 111 313**

Dimension: 297 x 420 mm - A3 **Ref. 111 316**











# FRAMES AND POLES

Plastic frames for portrait or landscape messages, available in different colours in A6, A5, A4 and A3 format. They adapt to poles.



## PORTRAIT AND LANDSCAPE

SHORT-SIDE OPEN

AVAILABLE COLOURS >

	1	2	3	4	5	6	7	8	9
<b>A6</b> 105x148 mm	550 012	550 000	550 005	550 008	550 013	550 003	550 002	550 009	550 001
<b>A5</b> 148x210 mm	550 412	550 400	550 405	550 408	550 413	550 403	550 402	550 409	550 401
<b>A4</b> 210x297 mm	550 812	550 800	550 805	550 808	550 813	550 803	550 802	550 809	550 801
<b>A3</b> 297x420 mm	551 212	551 200	551 205	551 208	551 213	551 203	551 202	551 209	551 201

1 . TRANSPARENT - 2 . WHITE - 3 . GREY - 4 . BLACK - 5 . BLUE - 6 . GREEN - 7 . RED - 8 . ORANGE - 9 . YELLOW

Frames can be used horizontally and vertically!



### TELESCOPIC POLE 300-600

Pole with adjustable high from 300 to 600 mm with metal base and T transparent support for frames.

Ref. 590 011

### TELESCOPIC POLE 800-1450

Pole with adjustable high from 800 to 1450 mm with metal base and T transparent support for frames.

Ref. 590 123

# INFORMATION SIGN

## FLOOR ADHESIVES

*Customizable on request*

Round stickers dimension: 25 x 25 cm.



Ref. AA 430 227



Ref. AB 430 227



Ref. AC 430 227



Ref. AD 430 227



Ref. AE 430 227



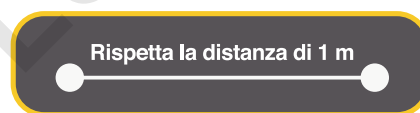
Ref. CA 430 227



Ref. AF 430 227



Ref. AG 430 227



Ref. BA 430 227

Dimension: 80 x 20 cm.



Ref. CB 430 227



Ref. AH 430 227



Ref. AI 430 227



Ref. BD 430 227

Dimension: 100 x 12 cm.



Ref. BB 430 227

Dimension: 100 x 16,5 cm.



Ref. BC 430 227

Dimension: 100 x 16,5 cm.

## ADHESIVES FOR CHECKOUT



Ref. BE 430 227

Dimension: 80 x 14 cm.



Ref. BF 430 227

Dimension: 80 x 14 cm.



Ref. AL 430 227

Dimension: 25 x 25 cm.



## INFORMATION WALL ADHESIVES

*Customizable on request*

Round stickers dimension: 15 x 15 cm.



Ref. DA 430 227



Ref. DB 430 227



Ref. DC 430 227



Ref. DD 430 227



Ref. DE 430 227



Ref. EA 430 227

Dimension: 30 x 13,5 cm.



Ref. EB 430 227

Dimension: 30 x 23 cm.

## SAFE DISTANCE ADHESIVE TAPE

Safe distance adhesive tape.  
Black/yellow.



Ref. 430 226

## ACCESSORIES FOR PROTECTION PRODUCTS

Buttons, screws and rivets for assembly visors, masks and many other safety products.

### TRANSPARENT SCREWS HEAD Ø mm 14 - PS 14

Transparent plastic screws.



to assemble from mm. 0  
to mm. 12 thickness.

**Ref. AC 112 280**



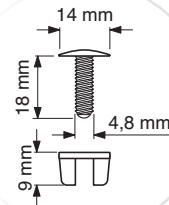
to assemble from mm. 0  
to mm. 25 thickness.

**Ref. AC 112 281**



to assemble from mm. 0  
to mm. 16 thickness.

**Ref. AC 112 282**



### PUSH STUDS Ø mm 12 - STUD 12

Push buttons.



to assemble mm. 2,5 thickness.

**Ref. AC 112 180**



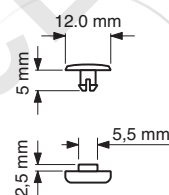
to assemble mm. 2,5 thickness.

**Ref. AC 112 190**



to assemble mm. 2,5 thickness.

**Ref. AC 112 200**



to assemble mm. 5 thickness.

**Ref. AC 112 191**

### PUSH BUTTONS Ø mm 10 - FB 10

Push buttons.



to assemble mm. 2 thickness.

**Ref. AC 112 170**



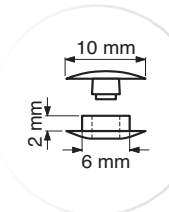
to assemble mm. 2 thickness.

**Ref. AC 112 171**



to assemble mm. 2 thickness.

**Ref. AC 112 172**

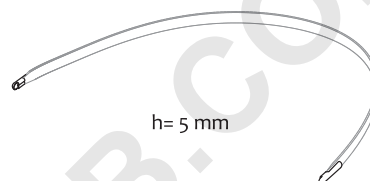


## ELASTICS FOR VISORS AND MASKS



Flat elastic with metal ends, height mm. 5.  
Sizes and colours on demand.

**Ref. AC 171 360**



Elastic coil 300/350 mt,  
width mm. 5 for masks.

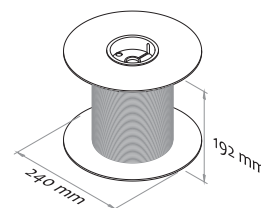
BLACK ●

**Ref. AC 171 391**



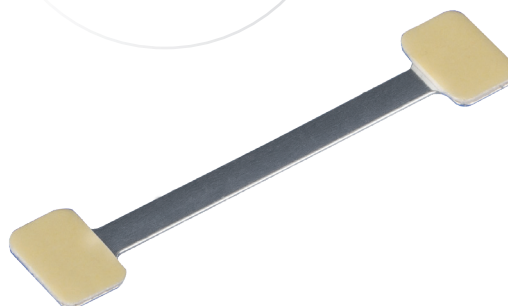
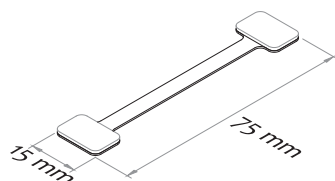
**Ref. AC 171 390**

○ WHITE



## TWISTER

Adhesive and twistable support that can keep the choosen position.  
Length mm. 75.



**Ref. AC 404 571**

# Index of references

Ref	pag	Ref	pag	Ref	pag	Ref	pag
111048	24	113760	10	550803	27	660136	23
111049	24	113761	10	550805	27	AA430227	28
111050	24	113765	10	550808	27	AB430227	28
111051	24	113766	11	550809	27	AC112170	30
111052	24	113767	11	550812	27	AC112171	30
111053	24	113770	8	550813	27	AC112172	30
111054	24	113771	8	551200	27	AC112180	30
111055	24	113772	8	551201	27	AC112190	30
111056	24	113775	9	551202	27	AC112191	30
111057	24	113776	9	551203	27	AC112200	30
111058	24	113777	9	551205	27	AC112280	30
111059	24	113780	7	551208	27	AC112281	30
111300	24	113781	6	551209	27	AC112282	30
111301	24	113782	6	551212	27	AC171360	31
111303	24	113783	6	551213	27	AC171390	31
111305	24	113784	6	590011	27	AC171391	31
111312	24	113785	6	590123	27	AC404571	31
111313	24	113786	6	660000	21	AC430227	28
111314	24	113787	7	660001	21	AD430227	28
111316	24	414153	11	660002	21	AE430227	28
112855	17	416020	11	660003	21	AF430227	28
112856	17	430226	29	660004	21	AG430227	28
112857	17	550000	27	660005	21	AH430227	28
112863	13	550001	27	660006	21	AI430227	28
112864	13	550002	27	660007	21	BA430227	28
112866	13	550003	27	660008	21	BB430227	28
112867	13	550005	27	660010	21	BC430227	28
112868	14	550008	27	660011	21	BD430227	28
112869	15	550009	27	660012	21	BE430227	28
112875	15	550012	27	660013	21	BF430227	28
112876	14	550013	27	660014	21	CA430227	28
112877	15	550400	27	660015	21	CB430227	28
113735	16	550401	27	660016	21	DA430227	29
113736	16	550402	27	660017	21	DB430227	29
113737	16	550403	27	660018	21	DC430227	29
113738	16	550405	27	660100	22	DD430227	29
113745	16	550408	27	660101	22	DE430227	29
113747	17	550409	27	660102	22	EA430227	29
113748	17	550412	27	660103	22	EB430227	29
113749	17	550413	27	660130	23		
113750	18	550800	27	660131	23		
113751	18	550801	27	660132	23		
113752	19	550802	27	660135	23		





Notes



Lined area for notes, featuring horizontal ruling lines and a large diagonal watermark reading 'WWW.DESIGNERCLUB.COM'.





WWW.DESIGNERCLUB.CO



**[www.designerclub.com](http://www.designerclub.com)**

Via 2 Giugno, 28  
21022 Azzate (VA) . Italia  
Tel. +39 0332 455 360  
Fax +39 0332 455 365  
[export@designerclub.com](mailto:export@designerclub.com)